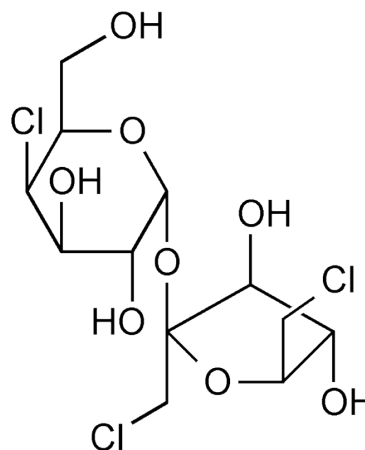


PRODUCT **Sucralose USP**

CAS no. [56038-13-2]

SYNONYMS Trichlorosucrose, E955,

CHARACTERISTICS White crystalline powder



TEST	SPECIFICATION
Assay	98.0% to 102.0% (on dried basis)
Identification	Conforms to USP tests
Specific rotation	+84.0° to +87.5°
Water	Not more than 2.0%
Residue on ignition	Not more than 0.7%
Heavy metals	Not more than 0.001% (10ppm)
Limit of hydrolysis products	Not more than 0.1%
Methanol	Not more than 0.1%
Related compounds	Not more than 0.5%

ENQUIRY