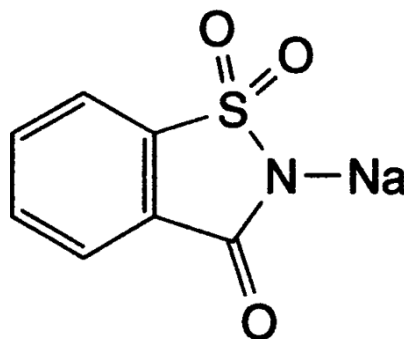


PRODUCT Saccharin Sodium Ph. Eur.

CAS no. [128-44-9]



CHARACTERISTICS White or almost white, crystalline powder or colourless crystals, efflorescent in dry air. Freely soluble in water, sparingly soluble in ethanol (96%).

TEST	SPECIFICATION
Assay	99.0% to 101.0% (anhydrous substance)
Identification	Conform to Ph. Eur. tests
Melting Point	226 °C to 230 °C
Appearance of solution	As per Ph. Eur. test: The solution is clear and colourless
Acidity or alkalinity	As per Ph. Eur. test: The solution becomes pink
o-Toluenesulphonamide	Not more than 10ppm
p-Toluenesulphonamide	Not more than 10ppm
Readily carbonisable substances	Conforms to Ph. Eur. test
Heavy metals	Not more than 20ppm
Water	Not more than 15.0%

ENQUIRY