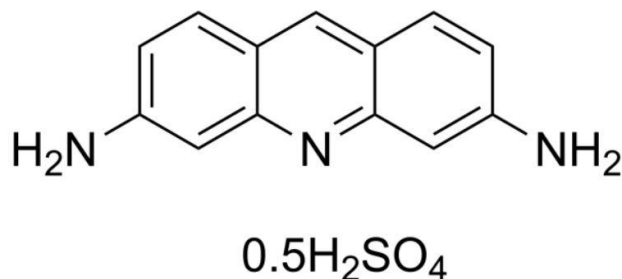


PRODUCT Proflavine Hemisulphate BP1968

CAS number 1811-28-5



CHARACTERISTICS An orange to red, crystalline powder, odourless and bitter tasting. Hygroscopic. Soluble at 20°C in 300 parts of water and in 35 parts of glycerol; very slightly soluble in alcohol (95%); insoluble in chloroform and in solvent ether.

TEST	SPECIFICATION
Content (Assay)	Minimum 98.0% (anhydrous substance)
Identification	Conforms to BP1968 tests
Acidity or alkalinity	As per BP1968 test: pH of saturated solution is 6.0 to 8.0
Certain other acridine derivatives	Conforms to BP1968 tests
Water	3.0% to 7.0%
Sulphated ash	Not more than 0.5%

ENQUIRY