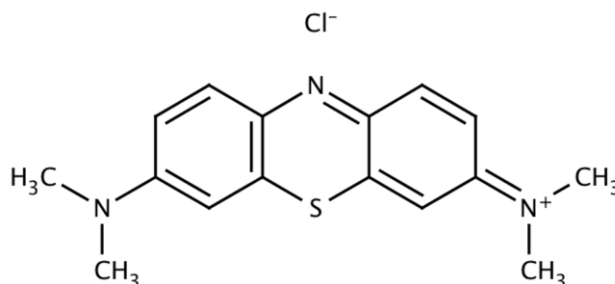


PRODUCT Methylene Blue Ph. Eur.

CAS no. [122965-43-9]

SYNONYMS Methylthioninium Chloride Hydrate; Basic Blue 9;



CHARACTERISTICS Dark blue or dark green, hygroscopic, crystalline powder with a metallic sheen. Slightly soluble in water and in ethanol (96%).

TEST	SPECIFICATION	
Identification	Conforms to Ph. Eur. tests	
Related substances	Impurity A	Maximum 5.0%
	Unspecified impurities	Maximum 0.1% (each)
	Sum of impurities (other than A)	Maximum 0.5%
Elemental impurities	Aluminium	Maximum 100ppm
	Cadmium	Maximum 1ppm
	Chromium	Maximum 100ppm
	Copper	Maximum 300ppm
	Iron	Maximum 200ppm
	Lead	Maximum 10ppm
	Manganese	Maximum 10ppm
	Mercury	Maximum 1ppm
	Molybdenum	Maximum 10ppm
	Nickel	Maximum 10ppm
	Tin	Maximum 10ppm
Zinc	Maximum 100ppm	
Loss on drying	8.0% to 24.0%	
Sulfated ash	Maximum 0.25%	
Assay (Content)	93.0% to 102.0% (dried substance)	

ENQUIRY