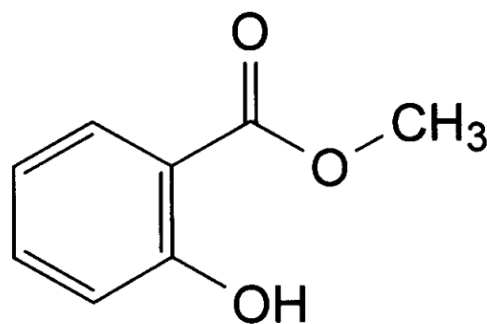


PRODUCT **Methyl Salicylate Ph. Eur.**

CAS number 119-36-8

SYNONYMS Witegreen Oil



CHARACTERISTICS Colourless or slightly yellow liquid. Very slightly soluble in water, miscible with ethanol (96%) and with fatty and essential oils.

TEST	SPECIFICATION
Content	99.0% to 100.5%
Identification	Conforms to Ph. Eur. test
Appearance of solution	As per Ph. Eur. test: The solution is clear and not more intensely coloured than reference solution Y ₇
Acidity	As per Ph. Eur. tests: Not more than 0.4 ml of 0.1 M NaOH is required to restore the blue colour
Relative density	1.180 to 1.186
Refractive index	1.535 to 1.538

ENQUIRY