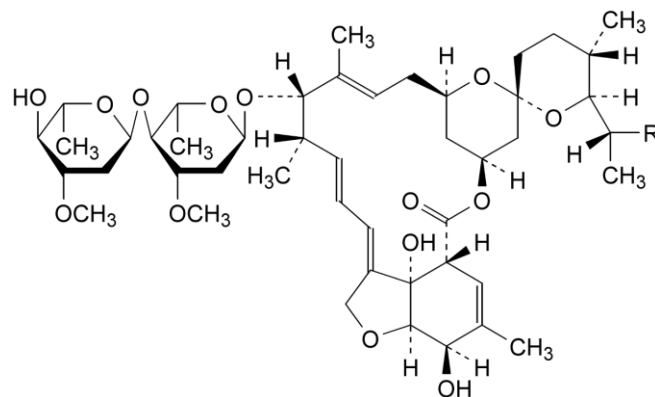


PRODUCT Ivermectin Ph. Eur.

CAS no. [70161-11-4]
[70288-86-7]

Definition Mixture of Ivermectin B1a & B1b
Semi-synthetic product derived from
a fermentation product.



CHARACTERISTICS White or yellowish-white, crystalline powder, slightly hygroscopic.
Practically insoluble in water, freely soluble in methylene chloride and in alcohol.

TEST	SPECIFICATION
Content Ivermectin B1a+B1b	95.0% to 102.0% (anhydrous substance)
Ratio B1a/(B1a+B1b)	Minimum 90.0%
Identification	Conforms to Ph. Eur. tests
Appearance of solution	As per Ph. Eur. test: solution is clear and not more intensely coloured than reference solution BY7
Specific optical rotation	-17° to -20° (anhydrous basis)
Related substances	Impurities with rel. retention 1.3-1.5 Maximum 2.5% Other impurities Maximum 1.0% Total impurities Maximum 5.0%
Ethanol	Maximum 5.0%
Formamide	Maximum 3.0%
Heavy metals	Maximum 20ppm
Water	Maximum 1.0%
Sulphated ash	Maximum 0.1%

ENQUIRY