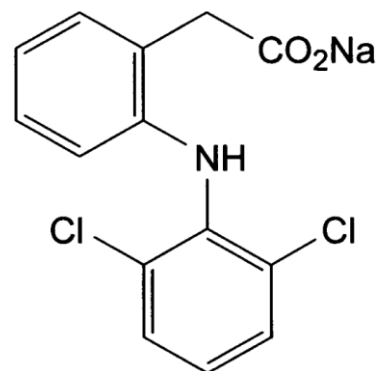


**PRODUCT**      **Diclofenac Sodium Ph. Eur.**

CAS no.                      [15307-79-6]

**CHARACTERISTICS**      White or slightly yellowish, slightly hygroscopic, crystalline powder. Sparingly soluble in water, freely soluble in methanol, soluble in ethanol (96%), slightly soluble in acetone.  
Melting point about 280 °C, with decomposition



TEST	SPECIFICATION	
<b>Assay</b>	99.0% to 101.0% (dried basis)	
<b>Identification</b>	Conforms to Ph. Eur. tests	
<b>Appearance of solution</b>	As per Ph. Eur. test: The solution is clear and its absorbance at 440 nm is not greater than 0.05	
<b>Heavy metals</b>	Not more than 10ppm	
<b>Loss on drying</b>	Not more than 0.5%	
<b>Related substances</b>	Impurity A	Not more than 0.2%
	Impurity B	Not more than 0.2%
	Impurity C	Not more than 0.2%
	Impurity D	Not more than 0.2%
	Impurity E	Not more than 0.2%
	Total impurities	Not more than 0.5%

**ENQUIRY**