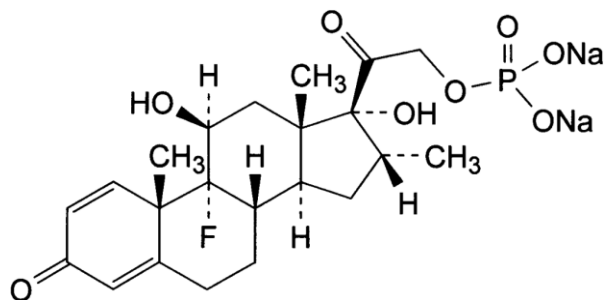


## PRODUCT      Dexamethasone Sodium Phosphate Ph. Eur.

CAS no.                      [2392-39-4]



**CHARACTERISTICS**      White or almost white, very hygroscopic powder. Freely soluble in water, slightly soluble in ethanol (96%), practically insoluble in methylene chloride. It shows polymorphism.

TEST	SPECIFICATION
<b>Assay</b>	97.0% to 103.0% (anhydrous substance)
<b>Identification</b>	Conforms to Ph. Eur. tests
<b>Appearance of solution</b>	As per Ph. Eur. test: Solution S is clear and not more intensely coloured than reference solution B <sub>7</sub>
<b>pH</b>	7.5 to 9.5
<b>Specific Optical Rotation</b>	+ 75 <sup>0</sup> to + 83 <sup>0</sup> (anhydrous substance)
<b>Inorganic phosphates</b>	Not more than 1.0%
<b>Ethanol</b>	Not more than 3.0%
<b>Ethanol and water</b>	As per Ph. Eur. test: Not more than 13.0% m/m for the sum of the % contents
<b>Related substances</b>	impurities A, B:                      Not more than 0.5% total impurities:                      Not more than 1.0%

**ENQUIRY**