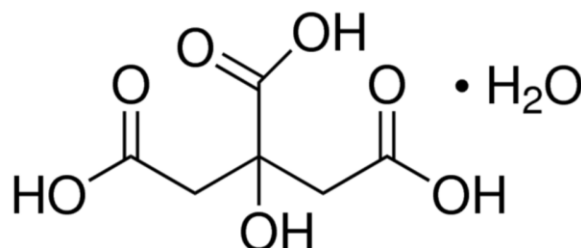


## PRODUCT

## Citric Acid Monohydrate Ph. Eur.

CAS no. 5949-29-1



**CHARACTERISTICS** White or almost white, crystalline powder, colourless crystals or granules, efflorescent. Very soluble in water, freely soluble in ethanol (96%).

TEST	SPECIFICATION
<b>Content</b>	99.5% to 100.5% (anhydrous substance)
<b>Identification</b>	Conforms to Ph. Eur. tests
<b>Appearance of solution</b>	As per Ph. Eur. test: The solution is clear and not more intensely coloured than reference solution Y <sub>7</sub> , BY <sub>7</sub> or GY <sub>7</sub>
<b>Readily carbonisable substances</b>	As per Ph. Eur. test: The solution is not more intensely coloured than a mixture of 1 ml of red primary solution and 9 ml of yellow primary solution
<b>Oxalic acid</b>	Maximum 360 ppm
<b>Sulphates</b>	Maximum 150 ppm
<b>Aluminium</b>	Maximum 0.2 ppm
<b>Heavy metals</b>	Maximum 10 ppm
<b>Water</b>	7.5% to 9.0%
<b>Sulphated ash</b>	Maximum 0.1%

**ENQUIRY**