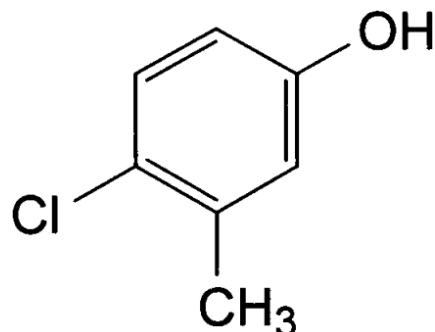


**PRODUCT**      **Chlorocresol Ph. Eur.**

CAS no.                      [59-50-7]

C<sub>7</sub>H<sub>7</sub>ClO



**SYNONYMS**                      p-Chloro-m-Cresol; para chloro meta cresol;

**CHARACTERISTICS**              A white crystalline powder or colourless or almost colourless crystals, slightly soluble in water, very soluble in alcohol, freely soluble in ether and in fatty oils. It dissolves in solutions of alkali hydroxides.

TEST	SPECIFICATION	
<b>Content (Assay)</b>	98.0% - 101.0%	
<b>Identification</b>	Conforms to Ph. Eur. tests	
<b>Melting Point</b>	64 <sup>0</sup> – 67 <sup>0</sup> C	
<b>Appearance of Solution</b>	The solution is clear and not more intensely coloured than reference solution BY <sub>6</sub>	
<b>Acidity</b>	Not more than 0.2ml of 0.01M NaOH is required to produce a pure yellow colour	
<b>Related Substances</b>	Any single impurity	Maximum 0.1%
	Total impurities	Maximum 1.0%
<b>Non-volatile matter</b>	Not more than 0.1%	

**ENQUIRY**