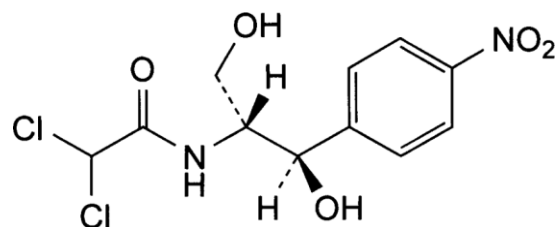


PRODUCT Chloramphenicol Ph. Eur.

CAS no. [56-75-7]



CHARACTERISTICS A white, greyish-white or yellowish-white, fine, crystalline powder or fine crystals, needles or elongated plates, slightly soluble in water, freely soluble in alcohol and in propylene glycol. A solution in ethanol is dextrorotatory and a solution in ethyl acetate is laevorotatory.

TEST	SPECIFICATION
Assay	98.0% – 102.0% (dried basis)
Identification	Conforms to Ph. Eur. tests
Melting point	149 °C to 153 °C
Acidity or alkalinity	As per Ph. Eur. test: Not more than 0.1 ml of 0.02 M HCl or 0.02 M NaOH is required to change the colour of the indicator
Specific optical rotation	+ 18.5° to + 20.5°
Related substances	Any impurity: maximum 0.5%
Chlorides	Not more than 100ppm
Loss on drying	Not more than 0.5%
Sulphated ash	Not more than 0.1%

ENQUIRY