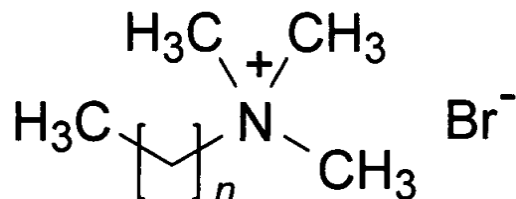


PRODUCT **Cetrimide Ph. Eur.**

CAS no. [57-09-0]

SYNONYMS Cetrimonium Bromide;



DEFINITION Cetrimide consists of trimethyltetradecylammonium bromide and may contain smaller amounts of dodecyl- and hexadecyl-trimethylammonium bromides.

CHARACTERISTICS White or almost white, voluminous, free-flowing powder.
Freely soluble in water and in alcohol.

TEST	SPECIFICATION
Content (Assay)	96.0% to 101.0% (as C ₁₇ H ₃₈ BrN, dried basis)
Identification	Conforms to Ph. Eur. tests
Appearance of solution	As per Ph. Eur. test: Solution S is clear and colourless
Acidity or alkalinity	As per Ph. Eur. test: Not more than 0.1 ml of 0.1 M HCl or 0.1 M NaOH is required to change the colour of the indicator
Amines and amine salts	As per Ph. Eur. test: The volume of titrant added between the 2 points is not greater than 2.0 ml
Loss on drying	Maximum 2.0%
Sulphated ash	Maximum 0.5%

ENQUIRY