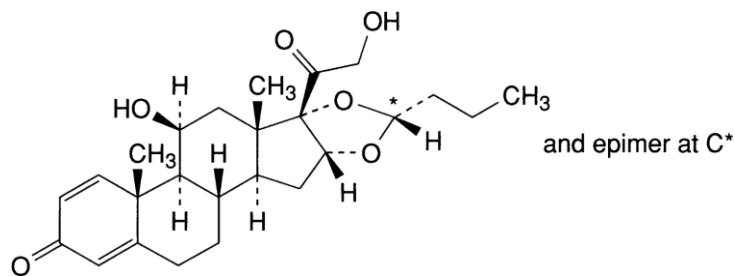


## PRODUCT Budesonide Ph. Eur.

CAS no. [51333-22-3]



**CHARACTERISTICS** A white or almost white, crystalline powder, practically insoluble in water, freely soluble in methylene chloride, sparingly soluble in alcohol.

TEST	SPECIFICATION
<b>Assay</b>	98.0% to 102.0% of a mixture of the C-22S (epimer A) and the C-22R (epimer B) (dried substance)
<b>Identification</b>	Conforms to Ph. Eur. tests
<b>Related substances</b>	Any impurity: Not more than 0.5% Total impurities: Not more than 1.5%
<b>Epimer A</b>	40.0% to 51.0%
<b>Methanol</b>	Not more than 0.1%
<b>Loss on drying</b>	Not more than 0.5%

**ENQUIRY**