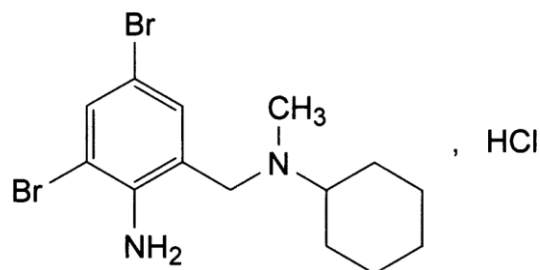


PRODUCT Bromhexidine Hydrochloride Ph. Eur.

CAS no. [611-75-6]

SYNONYMS Bromhexine Hydrochloride;



CHARACTERISTICS White or almost white, crystalline powder.
Very slightly soluble in water, slightly soluble in alcohol and in methylene chloride. It shows polymorphism.

TEST	SPECIFICATION
Content (Assay)	98.5% to 101.5% (dried basis)
Identification	Complies with Ph. Eur. tests
Appearance of solution	The solution is clear and not more intensely coloured than reference solution Y6
Related substances	Any impurity Maximum 0.1% Total impurities Maximum 0.3%
Loss on drying	Maximum 1.0%
Sulphated ash	Maximum 0.1%

ENQUIRY