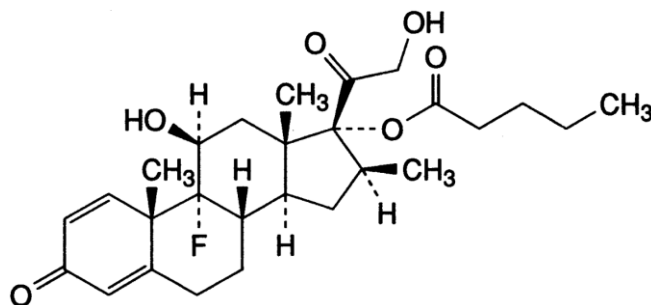


PRODUCT **Betamethasone Valerate Ph. Eur.**

CAS no. [2152-44-5]



CHARACTERISTICS A white or almost white, crystalline powder, practically insoluble in water, freely soluble in acetone and in methylene chloride, soluble in ethanol (96%). It melts at about 192 °C, with decomposition.

TEST	SPECIFICATION	
Assay	97.0% to 103.0% (dried substance)	
Identification	Conforms to Ph. Eur. tests	
Specific optical rotation	+75° to +82°	
Loss on drying	Not more than 0.5%	
Related substances	Any Single impurity	Not more than 1.5%
	One such impurity	Not more than 1.0%
	Total impurities	Not more than 3.0%

ENQUIRY